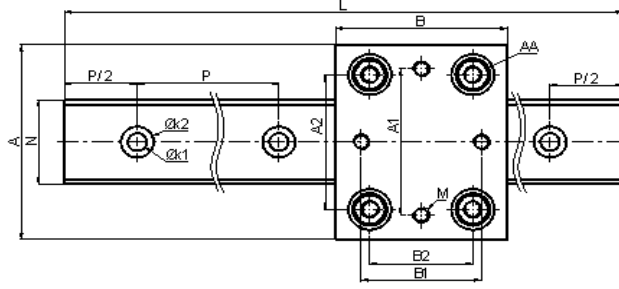
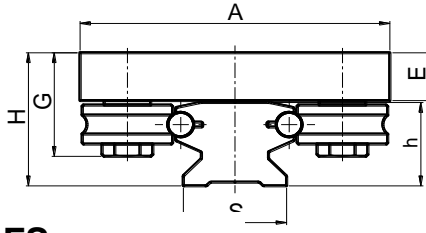


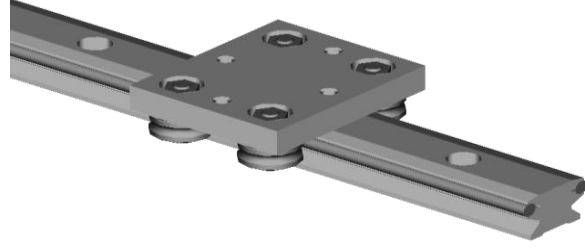
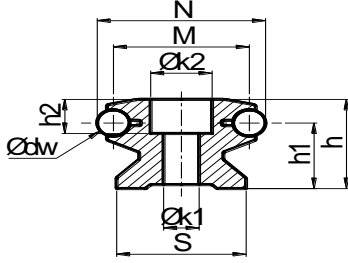
# BMS

## BFL-BFS LİNEER SİSTEMLER

### BFL



### BFS



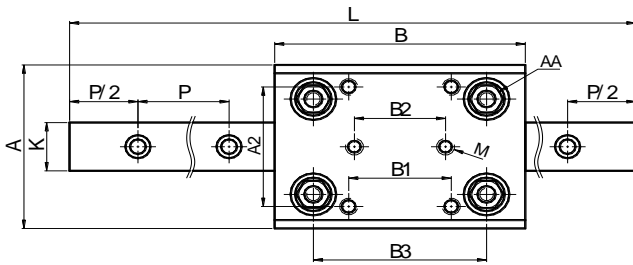
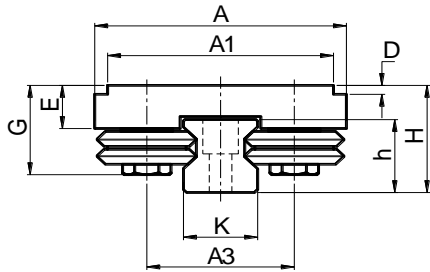
Model No	A	B	E	H	G	A1	B1	M	A2	B2	AA	FİYAT/AD.
BFL 32 SF	80	90	14	35,5	29,5	59	70	M8	54	60	13	79 €
BFL 52 SF	120	100	19,5	54,3	42,3	90	70	M10	83	60	17	84 €
Model No	N	M	S	h	dw	h1	k1	k2	h2	P	L	FİYAT/MT.
BFS 32 E	32	26	24	20	6	15	6,5	12	8	62,5	6000	79 €
BFS 52 E	52	42	40	34	10	25	11	19	13	125	6000	108 €

Model No	YÜK KAPASİTESİ		MOMENTLER		
	F <sub>y</sub> max N	F <sub>oy</sub> max N	M <sub>x</sub> Nm	M <sub>y</sub> Nm	M <sub>z</sub> Nm
BFS 32	850	1400	11	27	26
BFS 52	1500	2500	33	60	47

### MUADİL PARÇA NO

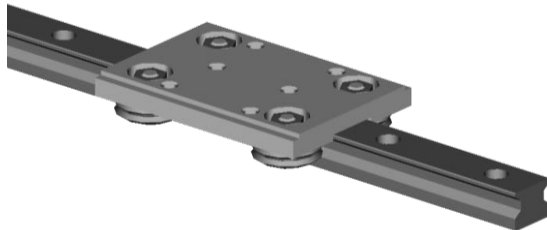
LFL 32 SF / Taşıyıcı- LFS 32 E / Ray  
LFL 52 SF / Taşıyıcı- LFS 52 E / Ray

## BMR-SCHNEEBERGER RAYLI LİNEER SİSTEMLER

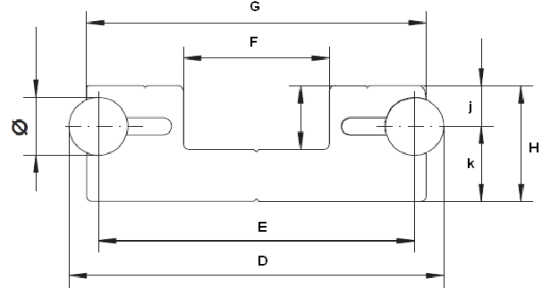


PLAKA	A	B	E	H	G	K	h	A1	A2	B1	B2	B3	D	M	AA	P	L
BMR 25	78	110	14,5	36	30	23	24,5	70	57	45	40	76	3	M8	13	60	6000

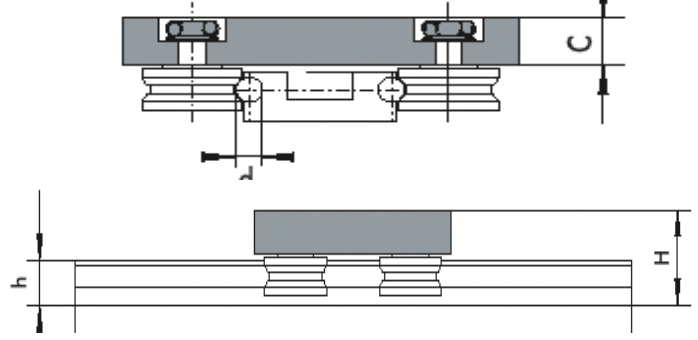
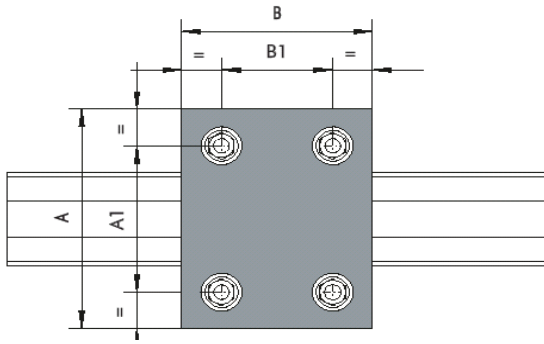
BMR 25 ÜST PLAKA 105,0 € / AD.  
MR 25 SCHNEEBERGER KIZAK 209,8 € / MT.



# BMS



PARÇA NO.	D	E	F	G	j	k	H	Ø	FİYAT/MT.
G 06 (Kızak)	36	30	14	32	-	7,5	12	6	63,0 €
G 10 (Kızak)	64	54	25	58	7	13	20	10	84,0 €
G 20 (Kızak)	90	70	20	75	12	18	30	20	157,0 €

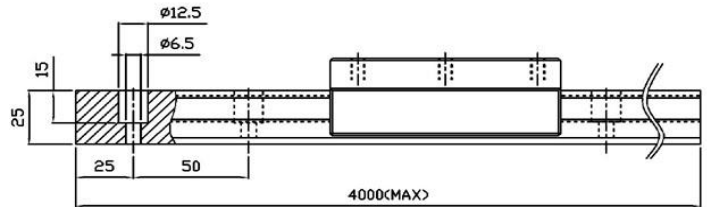
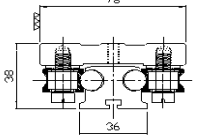
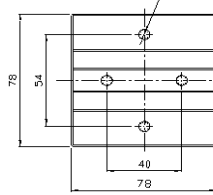
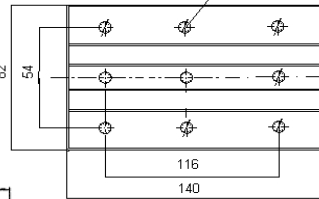
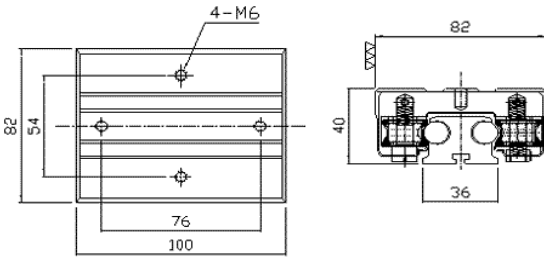


PARÇA NO.	A	B	A1	B1	C	H	d <sub>h7</sub>	h	FİYAT/AD.
C 06 (Rulmanlı Plaka)	85	70	58	42	14	27	6	12	70,4 €
C 10 B (Rulmanlı Plaka)	140	120	90,5	70	15	37	10	20	89,3 €
C 20 A (Rulmanlı Plaka)	180	150	126	90	20	51	20	30	126,0 €

## HLSR

TLB 12 L

TLE 12



Mil Çapı	Dinamik Yük	Statik Yük	Statik Moment			Ağırlık		ARABA FİYAT / AD.	RAY FİYAT / MT.
			To (kgf-m)	Tx (kgf-m)	Ty (kgf-m)	Araba kg	Ray kg/m		
TLB 12	180	290	5,4	4,0	4,8	0,54	3,1	80,0 \$	
TLB 12 L	180	290	5,4	7,2	8,5	0,74	3,1	112,3 \$	147,0 \$
TLE 12	140	230	4,3	3,2	3,8	0,36	3,1	63,9 \$	

TLB 12 / TLB 12L



TLE 12

