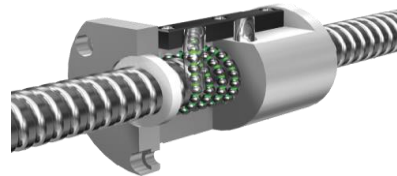




Mil Çapı	Hatve	Somun Modeli	Somun Fiyat/Ad.	Duble Somun Fiyat/Ad.	Vidalı Mil Fiyat/Mt.
6	01	FSK	221,9 \$	300mm Mil ile Takım	
8	01	FSK	221,9 \$	300mm Mil ile Takım	
	01	FSK	131,3 \$	-	262,0 \$
	02	FSK	131,3 \$	-	262,0 \$
	02	FSK	221,9 \$	300mm Mil ile Takım	
10	2,5	FSK,RSK	131,3 \$	-	248,3 \$
	02	FSK	131,3 \$	-	262,0 \$
	03	RSK	132,0 \$	-	248,3 \$
12	02	FSK	102,6 \$	-	103,4 \$
	04	FSK,RSK	86,2 \$	-	69,3 \$
	05	RSK-RSY	86,2 \$	-	69,9 \$
14	10	RSY	95,2 \$	-	69,9 \$
	02	FSKD	106,7 \$	-	116,9 \$
	04	FSI	86,2 \$	-	69,9 \$
16	05	FSU,FSI,FDU,FDI,RSY	86,2 \$	172,3 \$	56,5 \$
	10	FSU,FSI,FDU,FDI,RSY	102,6 \$	-	69,9 \$
	16	FSE-FSC-RSY	123,1 \$	-	71,2 \$
20	05	FSU,FSI,FDU,FDI,RSY	94,4 \$	189,2 \$	65,8 \$
	10	FSC-RSY	123,1 \$	-	77,9 \$
	20	FSE-FSC-RSY	147,7 \$	-	80,7 \$
25	04	FSI	114,9 \$	-	74,0 \$
	05	FSU,FSI,FDU,FDI,RSY	102,6 \$	205,2 \$	74,0 \$
	10	FSU,FSI,FDU,FDI,RSY	119,9 \$	238,0 \$	74,0 \$
32	25	FSE-FSC	160,0 \$	-	88,7 \$
	05	FSU,FSI,FDU,FDI,RSY	114,9 \$	229,7 \$	80,7 \$
	10	FSU,FSI,FDU,FDI,RSY	139,5 \$	279,0 \$	80,7 \$
	20	FSC-RSY	223,8 \$	-	84,6 \$
40	32	FSE-FSC	238,0 \$	-	100,8 \$
	05	FSU,FSI,FDU,FDI,RSY	176,4 \$	352,8 \$	117,5 \$
	10	FSU,FSI,FDU,FDI,RSY	176,4 \$	352,8 \$	127,6 \$
	20	FSC-RSY	283,1 \$	-	141,1 \$
50	40	FSE-FSC	299,5 \$	-	141,1 \$
	10	FSU,FSI,FDU,FDI,RSY	266,7 \$	533,0 \$	167,6 \$
	20	FSC	373,7 \$	-	202,4 \$
63	50	FSE	410,2 \$	-	230,4 \$
	10	FSU,FSI,FDU,FDI,RSY	492,3 \$	984,5 \$	502,7 \$
80	20	FSC	553,8 \$	984,5 \$	502,7 \$
	10	FSU	779,4 \$	1.558,7 \$	738,7 \$
	20	FSU	902,5 \$	1.804,0 \$	768,0 \$



D: ÇİFT TARAFI KESİK FLANŞ (FSUD,FSID,FSKD,FSCD,FSED,FDUD,FDID)  
N: TAM YUVARLAK FLANŞ (FSIN,FDIN)



## SOL DIŐ VİDALI MİL VE SOMUNLAR

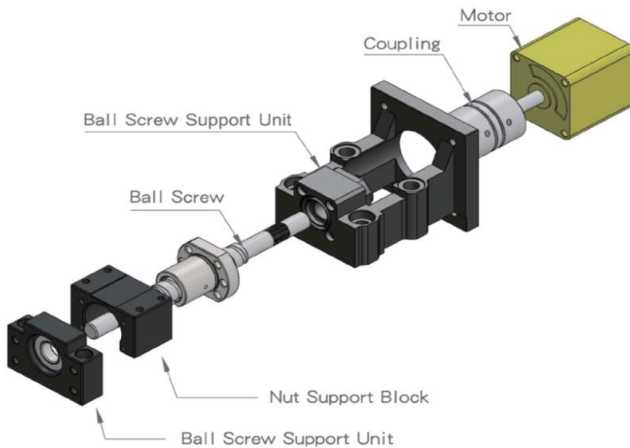
Mil Çapı	Hatve	Somun Modeli	Somun Fiyat/Adet	Vidalı Mil Fiyat/Metre
16	05	FSU	105,5 \$	70,4 \$
20	05	FSU	115,7 \$	82,1 \$
25	05	FSU	125,7 \$	92,2 \$
32	05	FSU	140,7 \$	100,6 \$
40	05	FSU	216,2 \$	146,7 \$



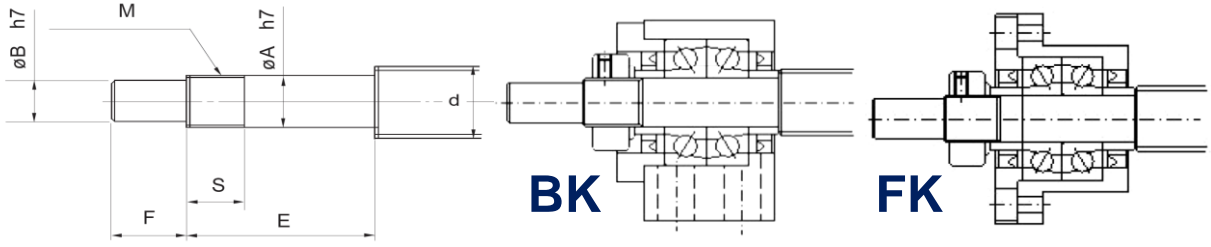
## YÜKSEK İLERLEME HASSASİYETLİ C5 SERİSİ VİDALI MİLLER

### GTEN C5 Serisi Vidalı Miller

Mil Çapı	Hatve	Uyumlu Olduğu Somun Modelleri	Vidalı Mil Fiyat/Metre
16	05	FSU,FSI,FDU,FDI,RSY	80,1 \$
20	05	FSU,FSI,FDU,FDI,RSY	93,2 \$
25	05	FSU,FSI,FDU,FDI,RSY	105,0 \$
32	05	FSU,FSI,FDU,FDI,RSY	114,6 \$
32	10	FSU,FSI,FDU,FDI,RSY	114,6 \$
40	5	FSU,FSI,FDU,FDI,RSY	166,8 \$
40	10	FSU,FSI,FDU,FDI,RSY	181,1 \$

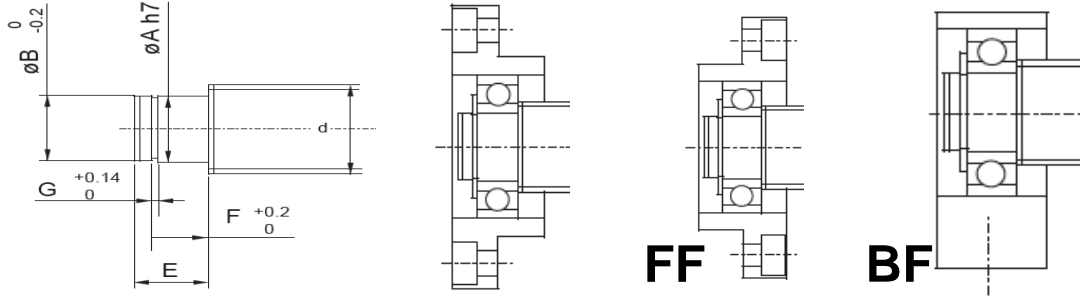


## SABİT YATAKLAMALAR İÇİN VİDALI MİL UÇ İŞLEME ÖLÇÜLERİ



Yatak Model No.	Vidalı Mil Çapı d	Yatak Mil Çapı A	B	E	F	Uç Vida Ölçüleri	
						M	S
BK 10	12/14/15	10	8	36	15	M10x1	16
BK 12	14/15/16	12	10	36	15	M12x1	14
BK 15	18/20	15	12	40	20	M15x1	12
BK 17	20/25	17	15	53	23	M17x1	17
BK 20	25/28	20	17	53	25	M20x1	15
BK 25	32/36	25	20	65	30	M25x1,5	18
BK 30	36/40	30	25	72	38	M30x1,5	25
BK 35	45	35	30	81	45	M35x1,5	28
BK 40	50	40	35	93	50	M40x1,5	35

## OYNAK YATAKLAMALAR İÇİN VİDALI MİL UÇ İŞLEME ÖLÇÜLERİ



Yatak Model No.	Vidalı Mil Çapı d	Yatak Mil Çapı A	E	Segman Kanalı		
				B	F	G
BF 10	12/14/15	8	10	7.6	7.9	0.9
BF 12	14/15/16	10	11	9.6	9.15	1.15
BF 15	18/20	15	13	14.3	10.15	1.15
BF 17	20/25	17	16	16.2	13.15	1.15
BF 20	25/28/30	20	19 (16)	19	15.35(13.35)	1.35
BF 25	30/32/36	25	20	23.9	16.35	1.35
BF 30	36/40	30	21	28.6	17.75	1.75
BF 35	40/45	35	22	33	18.75	1.75
BF 40	50	40	23	38	19.75	1.95

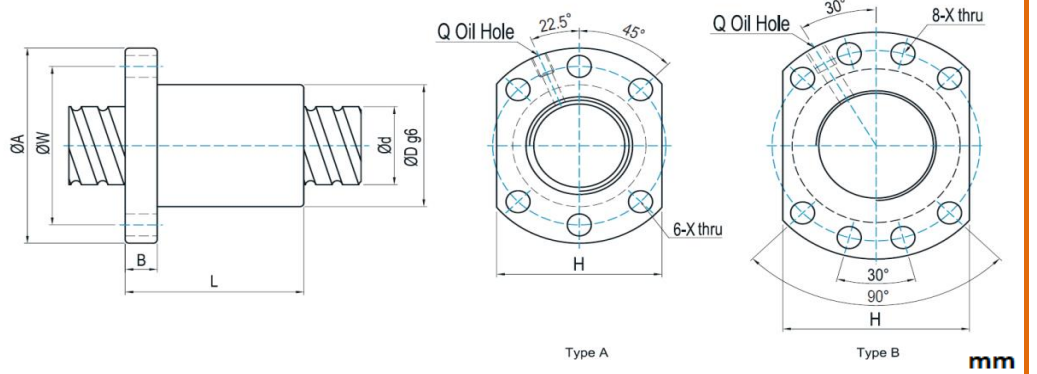
## Somun montajında bilyalar dökülürse ne yapılabilir?



1. Dökülen bilyaları toplayın. Çünkü sadece **orijinal** bilyalar kullanılmalıdır. Eğer 2-3 adet eksik bilya olursa bu fazla sorun teşkil etmez.
2. Bütün parçaları iyice temizleyin.
3. Koruma borusunu montaj aparatı olarak kullanabilirsiniz.
4. Bilyaları dizin.
5. Dizme işlemine en aşağıdaki sıradan başlayın, koruma borusu, bilyaların düşmesini önleyecektir.

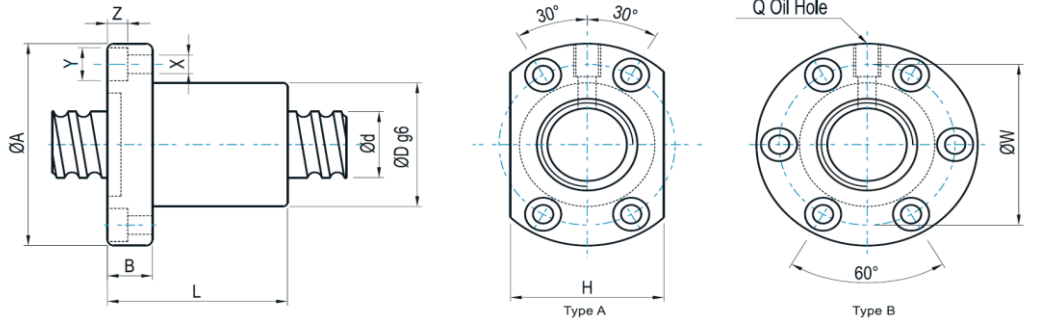


## FSU (DIN69051)



MODEL	Çap	Hatve	D	A	B	L	W	X	Tip	Dinamik Yük/ Kg	Statik Yük/ Kg
FSU 1605	16	5	28	48	10	50	38	5,5	A	1344	1525
FSU 2005	20	5	36	58	10	53	47	6,6	A	1512	1995
FSU 2505	25	5	40	62	10	53	51	6,6	A	1704	2581
FSU 2510	25	10	40	62	12	85	51	6,6	A	2881	3695
FSU 3205	32	5	50	80	12	53	65	9	A	1924	3403
FSU 3210	32	10	50	80	16	90	65	9	A	4834	7835
FSU 4005	40	5	63	93	16	56	78	9	B	2142	4342
FSU 4010	40	10	63	93	18	93	78	9	B	5399	10074
FSU 5010	50	10	75	110	18	93	93	11	B	5933	12313
FSU 6310	63	10	90	125	18	98	108	11	B	6700	16230
FSU 6320	63	20	95	135	20	138	115	13,5	B	8957	17945
FSU 8010	80	10	105	145	20	98	125	13,5	B	7547	21268
FSU 8020	80	20	125	165	25	143	145	13,5	B	10168	23611

## FSI



FSID.....Tip A  
FSIN.....Tip B

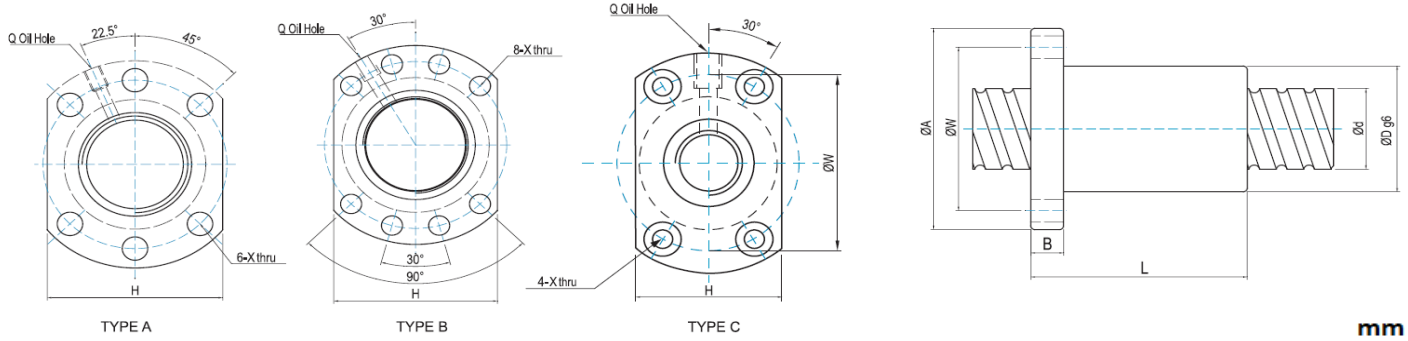
FSID  
(Kesik Flaşlı Model)

FSIN  
(Yuvarlak Flaşlı Model)

MODEL	Çap	Hatve	D	A	B	L	W	X	Tip	Dinamik Yük/ Kg	Statik Yük/ Kg
FSI 1604	16	4	30	49	10	45	39	4,5	A	944	1254
FSI 1605	16	5	30	49	10	50	39	4,5	A-B	1344	1525
FSI 1610	16	10	34	58	10	54,6	45	5,5	A-B	1512	1995
FSI 2005	20	5	34	57	12	53	45	5,5	A-B	1512	1995
FSI 2504	25	4	40	63	11	46	51	5,5	A	1178	2046
FSI 2505	25	5	40	63	12	53	51	5,5	A-B	1704	2581
FSI 2510	25	10	46	72	12	85	58	6,5	A-B	2881	3695
FSI 3205	32	5	46	72	12	53	58	6,5	A-B	1924	3403
FSI 3210	32	10	54	88	16	90	70	9	A-B	4834	7835
FSI 4005	40	5	56	90	16	56	72	9	A-B	2142	4342
FSI 4010	40	10	62	104	18	93	82	11	A-B	5399	10074
FSI 5010	50	10	72	114	18	93	92	11	A-B	5933	12343
FSI 8020	20	50	115	173	23	130	143	18	A-B	10168	23611



## FSC

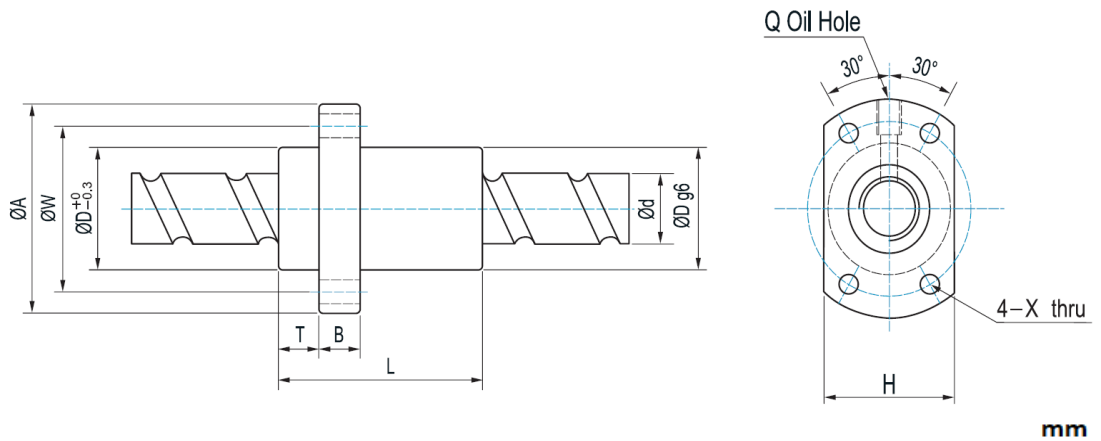


mm

MODEL	Çap	Hatve	D	A	B	L	W	X	Tip	Dinamik Yük/ Kgf	Statik Yük/ Kgf
FSC 1610	16	10	28	48	12	43	38	5,5	A	1180	1496
FSC 1616	16	16	28	48	12	61	38	5,5	A	1180	1496
FSC 2010	20	10	46	74	13	54	59	6,6	C	1765	2338
FSC 2020	20	20	36	58	10	55	47	6,6	A	1659	2464
FSC 2525	25	25	47	74	12	67	60	6,6	A	2481	3851
FSC 3220	32	20	50	80	13	78	65	9	A	2141	3576
FSC 3232	32	32	56	86	16	82	71	9	A	3585	6071
FSC 4020	40	20	63	93	15	83	78	9	B	3782	6468
FSC 4040	40	40	65	95	18	100	80	9	B	5778	11753
FSC 5020	50	20	75	110	18	121	93	11	B	7737	18189



## FSE



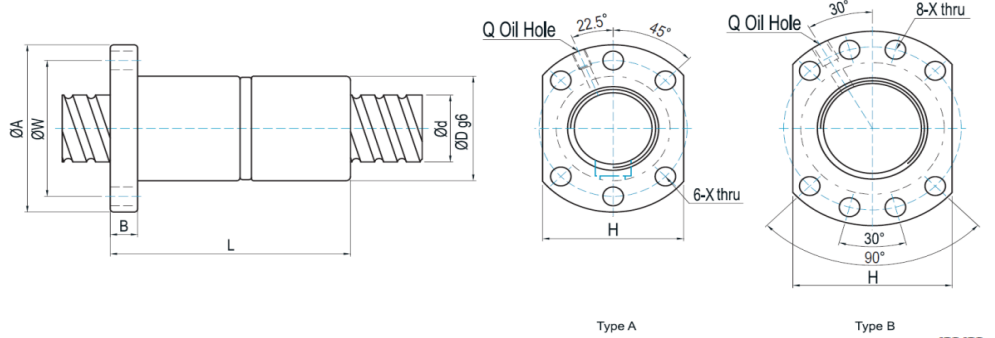
mm

MODEL	Çap	Hatve	D	A	B	L	W	X	Q	Dinamik Yük/ Kgf	Statik Yük/ Kgf
FSE 1616	16	16	32	53	10	48	42	4,5	M6	1512	1995
FSE 2020	20	20	39	62	10	55	50	5,5	M6	1659	2464
FSE 2525	25	25	47	74	12	67	60	6,6	M6	2481	3851
FSE 3232	32	32	58	92	15	82	74	9	M6	3585	6071
FSE 4040	40	40	73	114	17	100	93	11	M6	5778	11753
FSE 5050	50	50	90	135	20	125	112	14	M6	8819	19241



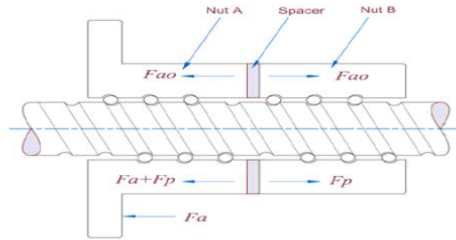
## FDU (DIN69051)

### Double Tip Somun



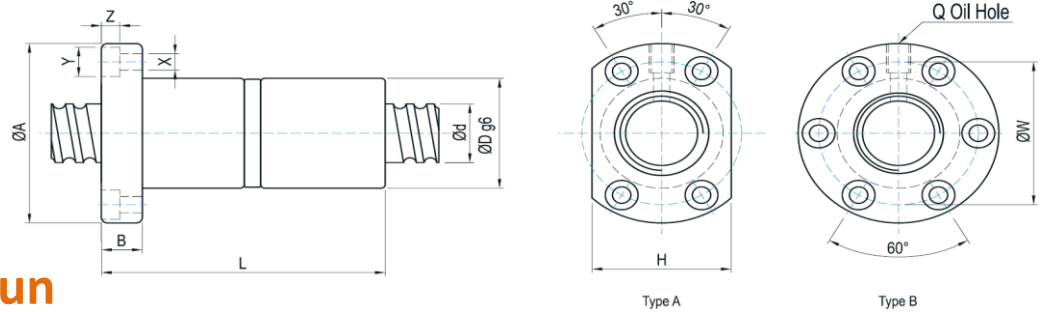
mm

MODEL	Çap	Hatve	D	A	B	L	W	X	Tip	Dinamik Yük/ Kgf	Statik Yük/ Kgf
FDU 1605	16	5	28	48	10	80	38	5,5	A	1049	1144
FDU 2005	20	5	36	58	12	92	47	6,6	A	1512	1995
FDU 2505	25	5	40	62	12	92	51	6,6	A	1704	2581
FDU 2510	25	10	40	62	12	153	51	6,6	A	2881	3695
FDU 3205	32	5	50	80	12	92	65	9	A	1924	3403
FDU 3210	32	10	50	80	16	160	65	9	A	4834	7853
FDU 4005	40	5	63	93	15	96	78	9	B	2142	4342
FDU 4010	40	10	63	93	18	162	78	9	B	5399	10074
FDU 5010	50	10	75	110	16	162	93	11	B	5933	12313
FDU 6310	63	10	90	125	18	182	108	11	B	6700	16230
FDU 6320	63	20	95	135	20	253	115	13,5	B	8957	17945
FDU 8010	80	10	105	145	20	182	125	13,5	B	7547	21268
FDU 8020	80	20	125	165	25	253	145	13,5	B	10168	23611



## FDI

### Double Tip Somun



FDID  
(Keskik Flanşlı Model)

FDIN  
(Yuvarlak Flanşlı Model)

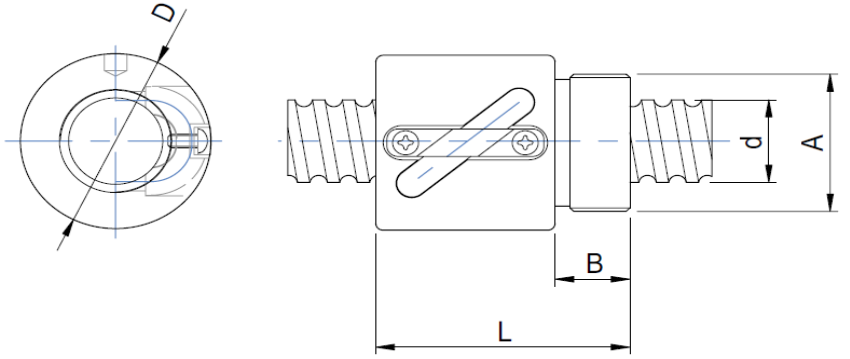
mm

FDID.....Tip A  
FDIN.....Tip B

MODEL	Çap	Hatve	D	A	B	L	W	X	Tip	Dinamik Yük/ Kgf	Statik Yük/ Kgf
FDI 2505	25	5	40	63	12	92	51	5,5	A	1704	2581
FDI 2510	25	10	46	72	12	156	58	6,5	A	2881	3695
FDI 3205	32	5	46	72	12	92	58	6,5	A	1924	3403
FDI 3210	32	10	54	88	16	160	70	9	A	4834	7835
FDI 4010	40	10	62	104	18	162	82	11	A	5399	10074
FDI 5010	50	10	72	114	18	162	92	11	A	5933	12313



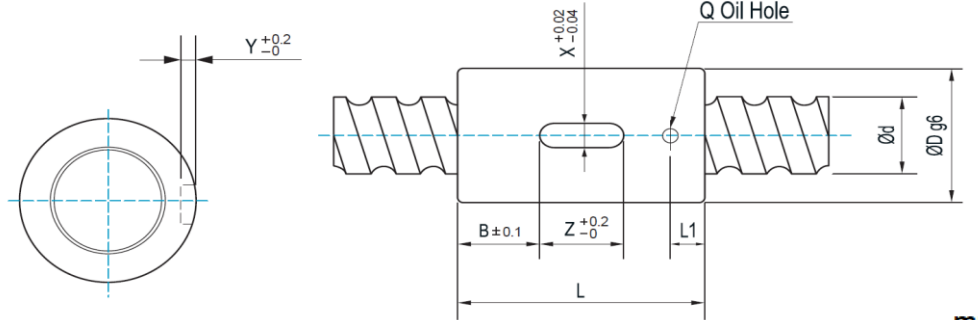
## RSW



mm

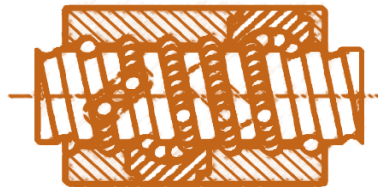
MODEL	Çap	Hatve	D	B	L	A	Dinamik Yük/ Kgf	Statik Yük/ Kgf
RSW 0825	8	2,5	17,5	7,5	23,5	M15x1	150	232
RSW 1204	12	4	25,5	10	34	M20x1	425	738
RSW 1205	12	5	25,5	10	39	M20x1	662	1036

## RSY



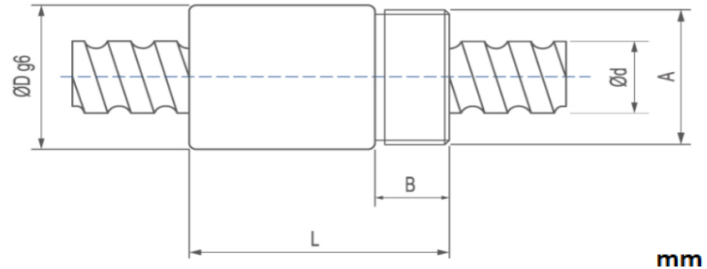
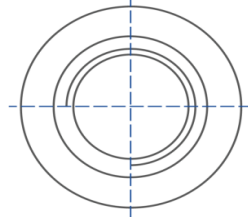
mm

MODEL	Çap	Hatve	D	L	B	X	Z	Q	L1	Dinamik Yük/ Kgf	Statik Yük/ Kgf
RSY 1205	12	5	24	40	14	3	12	3	5	514	594
RSY 1210	12	10	24	40	14	3	12	3	5	390	466
RSY 1605	16	5	28	50	15	5	20	3	7	1344	1525
RSY 1610	16	10	28	45	12,5	5	20	3	7	1181	1496
RSY 1616	16	16	28	45	12,5	5	20	3	7	833	997
RSY 2005	20	5	36	53	16,5	5	20	3	7	1512	1995
RSY 2010	20	10	36	54	17	5	20	3	7	1765	2338
RSY 2020	20	20	36	55	17,5	5	20	3	7	1659	2464
RSY 2505	25	5	40	53	16,5	5	20	3	7	1704	2581
RSY 2510	25	10	40	54	17	5	20	3	7	1614	2460
RSY 3205	32	5	50	53	11,5	6	30	3	7	1924	3403
RSY 3210	32	10	50	70	20	6	30	3	7	3775	5877
RSY 3220	32	20	50	78	24	6	30	3	7	2141	3576
RSY 4005	40	5	63	56	13	6	30	3	7	2142	4342
RSY 4010	40	10	63	80	25	6	30	3	7	4216	7556
RSY 4020	40	20	63	83	26,5	6	30	3	7	3782	6468
RSY 5010	50	10	75	82	23	6	36	3	7	4633	9235
RSY 6310	63	10	85	90	29	6	32	5	14	6700	16230





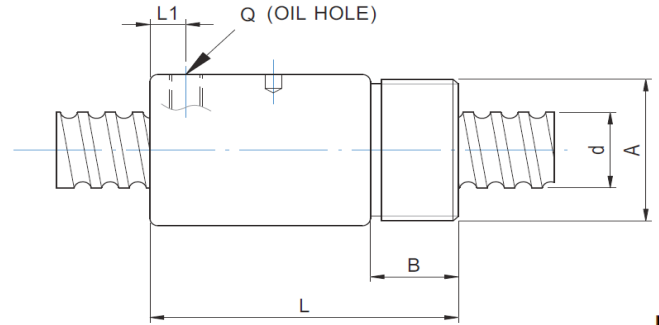
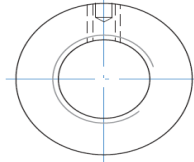
# RSK



mm

MODEL	Çap	Hatve	D	A	B	L	n	Dinamik Yük/ Kg	Statik Yük/ Kg
RSK 0825	8	2,5	17,5	M15x1	8	26	T3	215	239
RSK 1003	10	3	21	M18x1	9	29	T3	403	424
RSK 1204	12	4	25,5	M20x1	10	34	T3	645	693
RSK 1205	12	5	25,5	M20x1	10	39	T3	514	594
RSK 1605	16	5	32,5	M26x1,5	12	42	T3	1049	1144

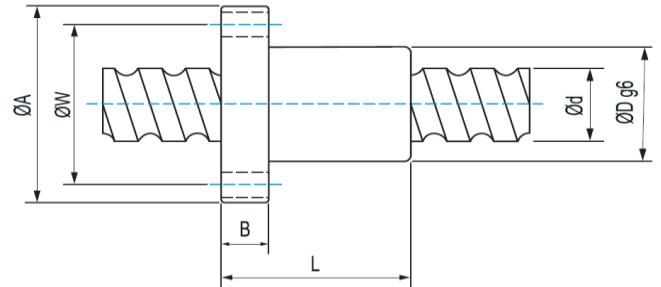
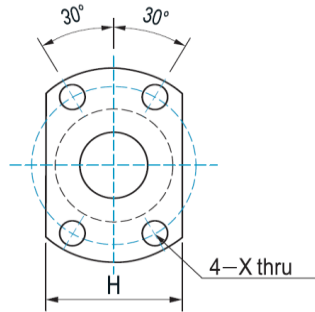
# RSU



mm

MODEL	Çap	Hatve	D	A	B	L	Q	L1	n	Dinamik Yük/ Kg	Statik Yük/ Kg
RSU 1605	16	5	32	M30x1,5	16	56	M6	6,5	T4	1344	1525
RSU 2005	20	5	38	M35x1,5	16,5	59,5	M6	7	T4	1512	1995
RSU 2505	25	5	42	M40x1,5	17	60	M6	7	T4	1704	2581
RSU 2510	25	10	42	M40x1,5	17	90	M6	10	T4	2881	3695
RSU 3205	32	5	52	M48x1,5	19	60	M6	7	T4	1924	3403
RSU 3210	32	10	52	M48x1,5	19	93	M6	12	T4	4834	7835

# FSK



mm

MODEL	Çap	Hatve	D	A	B	L	W	X	H	Dinamik Yük/ Kg	Statik Yük/ Kg
FSK 0601	6	1	12	24	3,5	18	18	3,4	16	111	123
FSK 0801	8	1	14	27	4	20	21	3,4	18	126	162
FSK 0802	8	2	16	29	4	26	23	3,4	20	215	239
FSK 0825	8	5	16	29	4	26	23	3,4	20	215	239
FSK 1002	10	2	18	35	5	28	27	4,5	22	240	302
FSK 1202	12	2	20	37	5	28	29	4,5	24	265	377
FSK 1204	12	4	28	48	6	35	39	5,5	30	645	693
FSK 1402	14	2	21	40	6	28	31	5,5	26	283	440