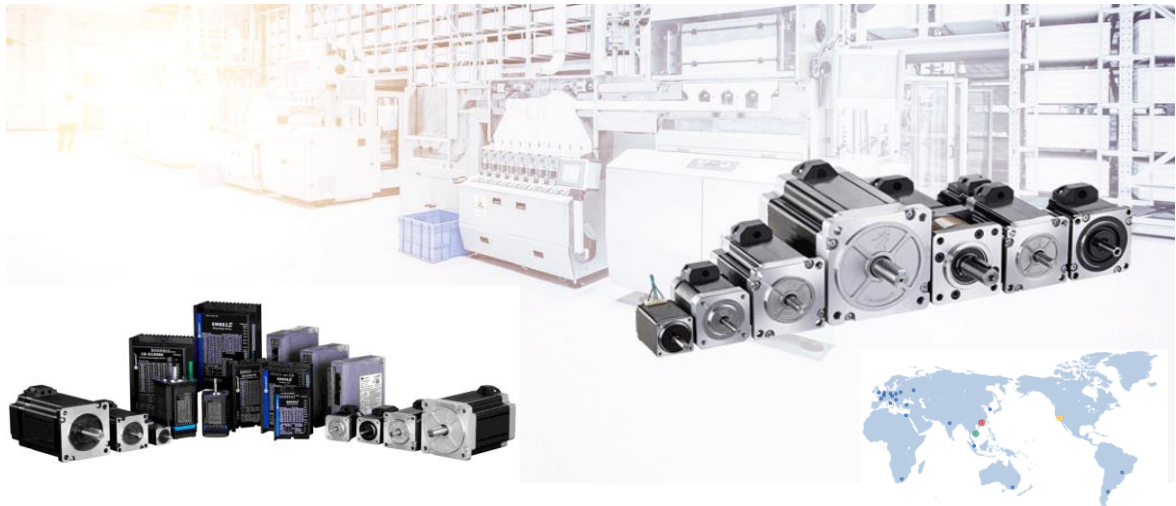
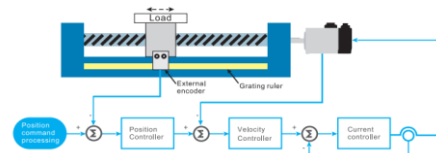
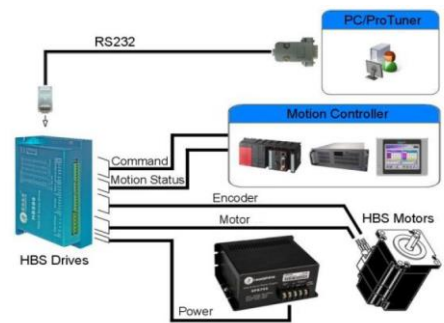




Leadshine



Why Leadshine



Laser Machine Industry



AGV Logistics Industry



Industrial Robots



Packaging



MEDICAL AND HEALTHCARE INDUSTRY



TEXTILE AND GARMENT



Printing Machines



Logistics



Lithium battery



Leadshine



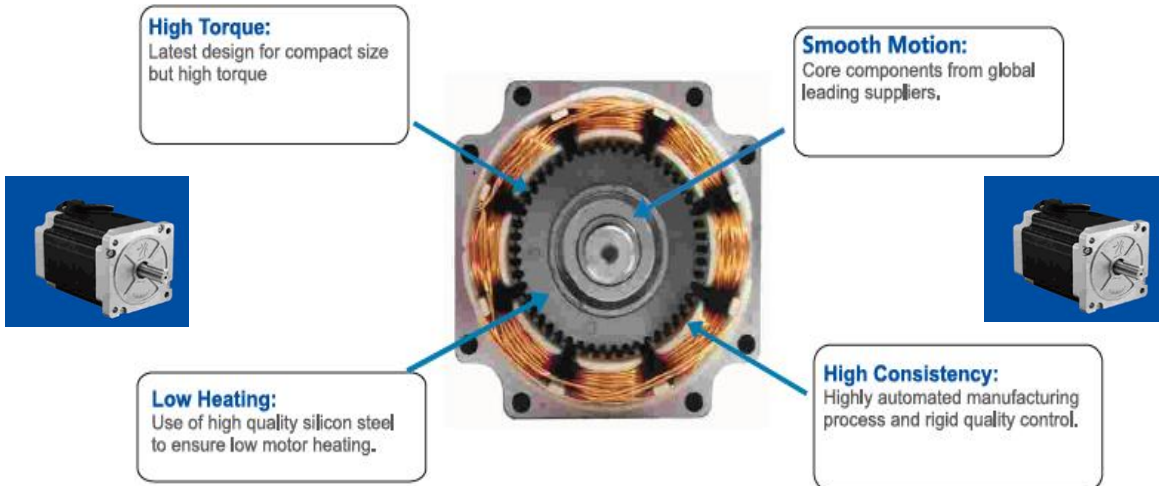
2 FAZLI HİBRİT STEP (ADIM) MOTORLAR

HS Serisi Step Motorlar

Ürün Kodu	Mil Çapı (mm)	Flanş	Tork (N.m)	FİYAT
57HS09 (8 Kablolu)	6,35 mm	Nema 23 (57x57)	0,9	66,2 \$
57HS22 (8 Kablolu)	8 mm	Nema 23 (57x57)	2,2	58,0 \$
57HS30 (8 Kablolu)	8 mm	Nema 23 (57x57)	3,0	112,0 \$
86HS45 (8 Kablolu)	12,7 mm	Nema 34 (86x86)	4,5	109,0 \$
86HS85 (8 Kablolu)	12,7 mm	Nema 34 (86x86)	8,5	144,0 \$
86HS120 (8 Kablolu)	15,875 mm	Nema 34 (86x86)	12,0	213,4 \$

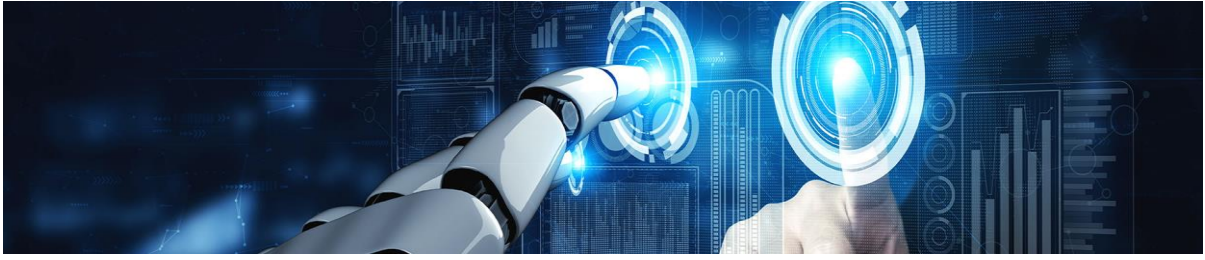
CM Serisi Step Motorlar

Ürün Kodu	Mil Çapı (mm)	Flanş	Tork (N.m)	FİYAT
42CM04 (4 Kablolu)	5 mm	Nema 17 (42x42)	0,4	35,0 \$
57CM23 (4 Kablolu)	8 mm	Nema 23 (57x57)	2,3	49,0 \$
60CM30X (4 Kablolu)	8 mm	Nema 24 (60x60)	3,0	81,2 \$
86CM45 (4 Kablolu)	12,7 mm	Nema 34 (86x86)	4,5	92,3 \$
86CM85 (4 Kablolu)	12,7 mm	Nema 34 (86x86)	8,5	131,0 \$
86CM85-BZ Frenli	14 mm	Nema 34 (86x86)	8,5	329,1 \$
86CM120 (4 Kablolu)	14 mm	Nema 34 (86x86)	12,0	195,0 \$
110CM28 (4 Kablolu)	19 mm	Nema 42 (110x110)	28,0	472,3 \$





Leadshine



STEP (ADIM) MOTOR SÜRÜCÜLERİ

Ürün Kodu	Akım	Voltaj	FİYAT
EM422S	2,2 A	12V - 40V DC	75,0 \$
DM542	4,2 A	20V - 50V DC	96,0 \$
DM556	4,2 A	20V - 50V DC	139,0 \$
DMA860H	7,2 A	30V - 110V DC / 18V - 80V AC	144,0 \$
DM870	7 A	24V - 72V DC	158,0 \$
DMA882S	8,2 A	30V - 110V DC / 18V - 80V AC	173,0 \$
DM2282 (MD2278)	8,2 A	180V - 220V AC	353,0 \$





Leadshine



ENCODERLİ HİBRİT STEP SERVO MOTOR

Ürün Kodu	Tork (N.m)	FİYAT
86HS40-EC (86HSM45-E1)	4,5	227,4 \$
86HS80-EC (86CME85)	8,5	262,4 \$



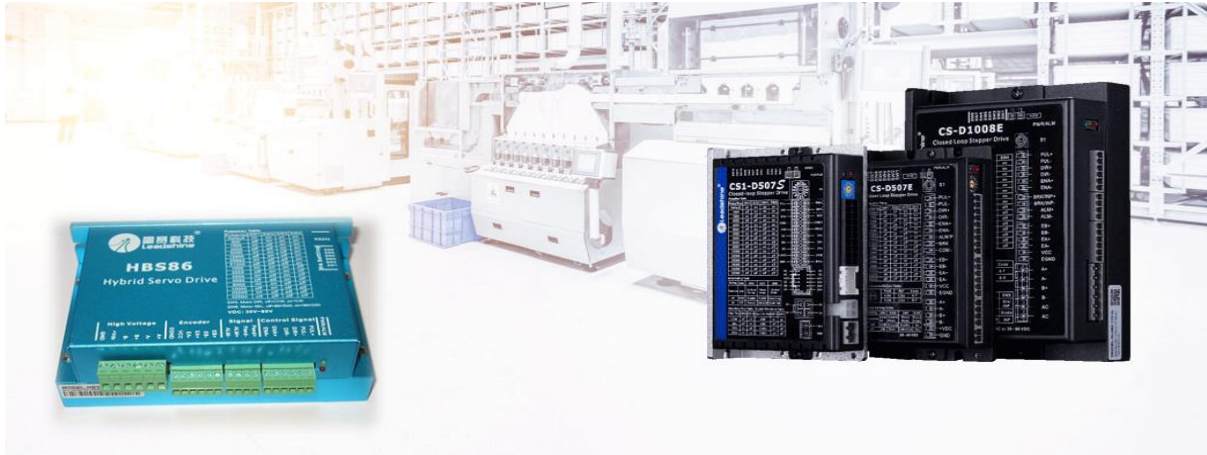
SOKETLİ SERİ ENCODERLİ HİBRİT STEP SERVO

CS-M21706	0,6	103,4 \$
CS-M22313	1,3	105,0 \$
CS-M23445	4,5	147,6 \$
CS-M23485	8,5	195,6 \$
CS-M234120	12,0	221,4 \$



ENCODERLİ HİBRİT STEP SERVO MOTOR SÜRÜCÜ

Ürün Kodu	Voltaj / Akım	FİYAT
HBS86	30 - 80 DC / 8,2A	215,0 \$
CS-D808	20 - 80 DC / 8A	152,3 \$
CS-D1008E	18-80V AC - 30-110V DC / 8A	175,0 \$



ENCODERLİ HİBRİT STEP SERVO MOTOR KABLOLARI

Ürün Kodu	Ürün Açıklaması	FİYAT
Motor Güç Kablosu		
CABLEH-RZ3M0	3mt Motor Güç Bağlantı Kablosu	18,0 \$
CABLEH-RZ5M0	5mt Motor Güç Bağlantı Kablosu	28,8 \$
CABLEH-RZ10M0	10mt Motor Güç Bağlantı Kablosu	54,0 \$
Motor Encoder Kablosu		
CABLEH-BM3M0	3mt Encoder Bağlantı Kablosu	18,0 \$
CABLEH-BM5M0	5mt Encoder Bağlantı Kablosu	28,8 \$
CABLEH-BM10M0	10mt Encoder Bağlantı Kablosu	54,0 \$

NOT: Yukarıda belirtilen güç ve encoder kabloları; CS-M serisi motorlar ve CS serisi sürücüler için uygundur.

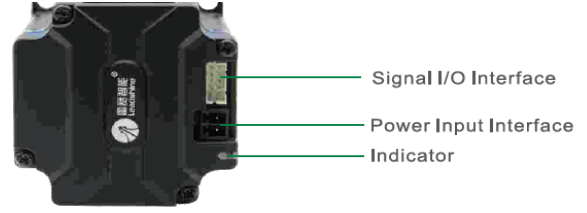




Leadshine



INTEGRATED STEP MOTORLAR



Step Angle	1.8°		
Position Accuracy	±0.09°		
Max Temperature	95° C		
Operation Environment	Temperature: -10° C ~ 50° C; Humidity: 85%RH Max		
IP Rate	IP20		
Radial Load (N) (Distance to the flange 10mm)	NEMA17	NEMA23	NEMA24
	30	75	90
Axial Load (N)	Less than motor weight		

